

## CD3

**Clone: MRQ-39**

**Code: MON-RTU1237**

### Presentation

Anti-CD3 is a purified rabbit monoclonal from tissue culture supernatant diluted in phosphate buffered saline, pH 7.4, with protein base, and preserved with sodium azide.

### Applications

Anti-CD3 has been considered the best all around T-cell marker. This antibody reacts with an antigen present in early thymocytes. The positive staining of this marker may represent a sign of early commitment to the T-Cell lineage.

**Antibody:** CD3

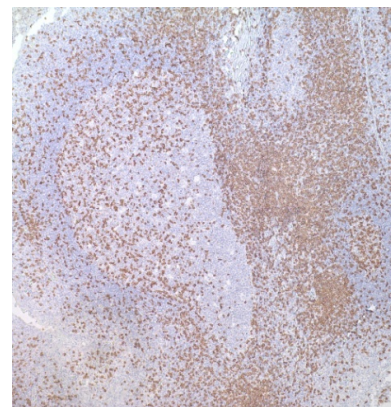
**Clone:** MRQ-39

**Host:** Rabbit

**Isotype:** IgG<sub>1</sub>

**Positive control:** Tonsil, T-Cell lymphomas

**Visualization:** Membranous



### Preparation and Pretreatment

1. Cut 3-4  $\mu\text{m}$  section of formalin-fixed paraffin-embedded tissue and place on positively charged slides; dry overnight at 58°C.
2. Deparaffinize, rehydrate, and epitope retrieve; the preferred method is the use of Heat Induced Epitope Retrieval (HIER) techniques using MON-APP160 in conjunction with a pressure cooker. The preferred method allows for simultaneous deparaffinization, rehydration, and epitope retrieval. Upon completion, rinse with 5 changes of distilled or deionized water.
3. If using HRP detection system, place slides in peroxide block for 10 minutes; rinse. If using AP detection system, omit this step.

### References

1. Denning, SM, et al., Oxford Univ. Press 1987;144-147
2. Beverley, PCL, et al., European J of Immunology 11:329-334
3. Clevers, H, et al., European J of Immunology 1988;18:705-710
4. Meuer, SC et al., Immunology Today 1989;10:255-228
5. Campana, D, et al., J of immunology 1987;138:648-665
6. Hedvat CV, et al., Hum Pathol. 2002 Oct; 33 (10):968-74
7. Karube K, et al., Am J Surg Pathol. 2003 Jul; 27(10):1366-74
8. Dogan A, et al., Am J Surg Pathol. 2003 Jul; 27(7):903-11
9. Axdorph U, et al., APMIS 2002 May; 110(5):379-90